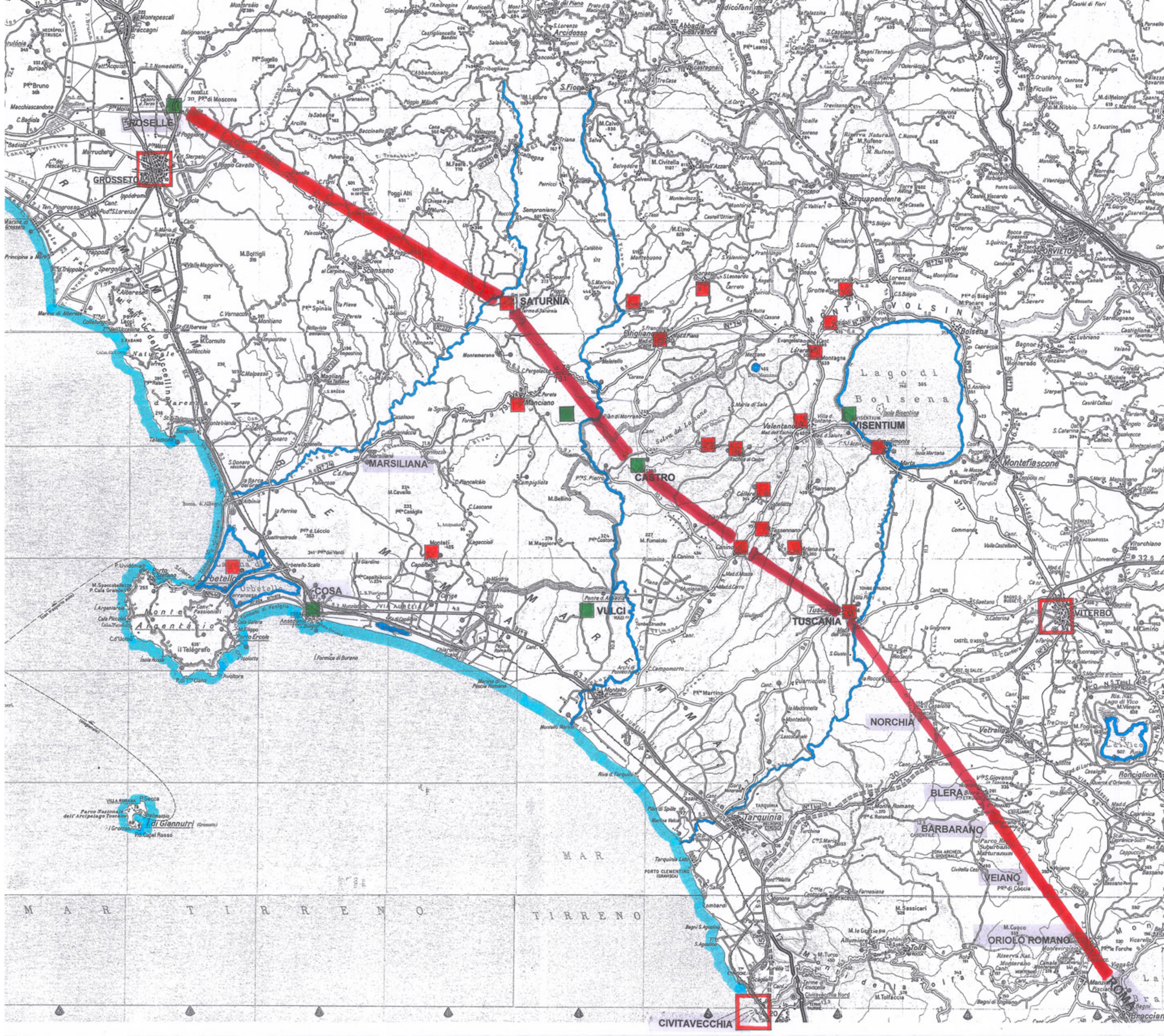
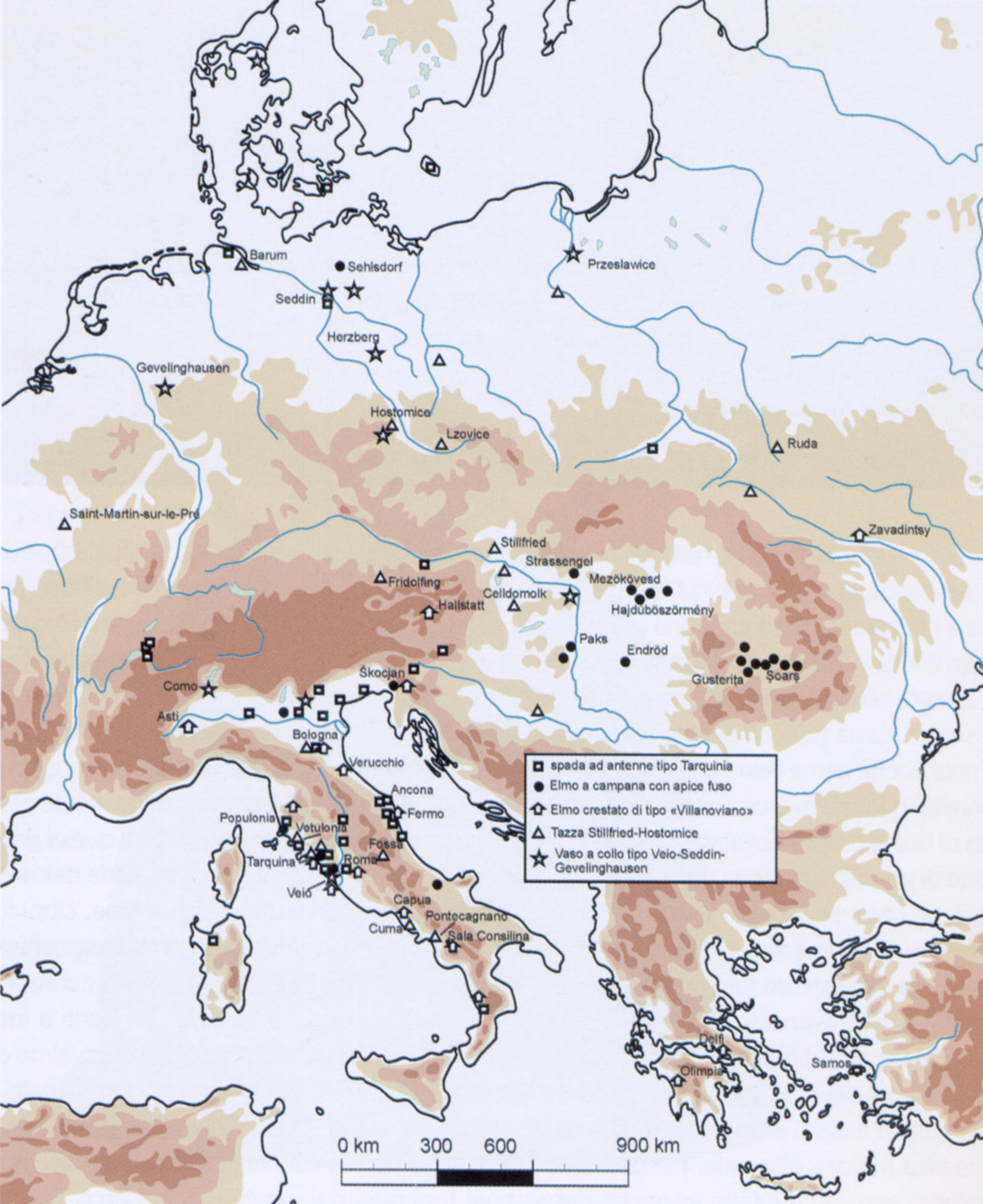


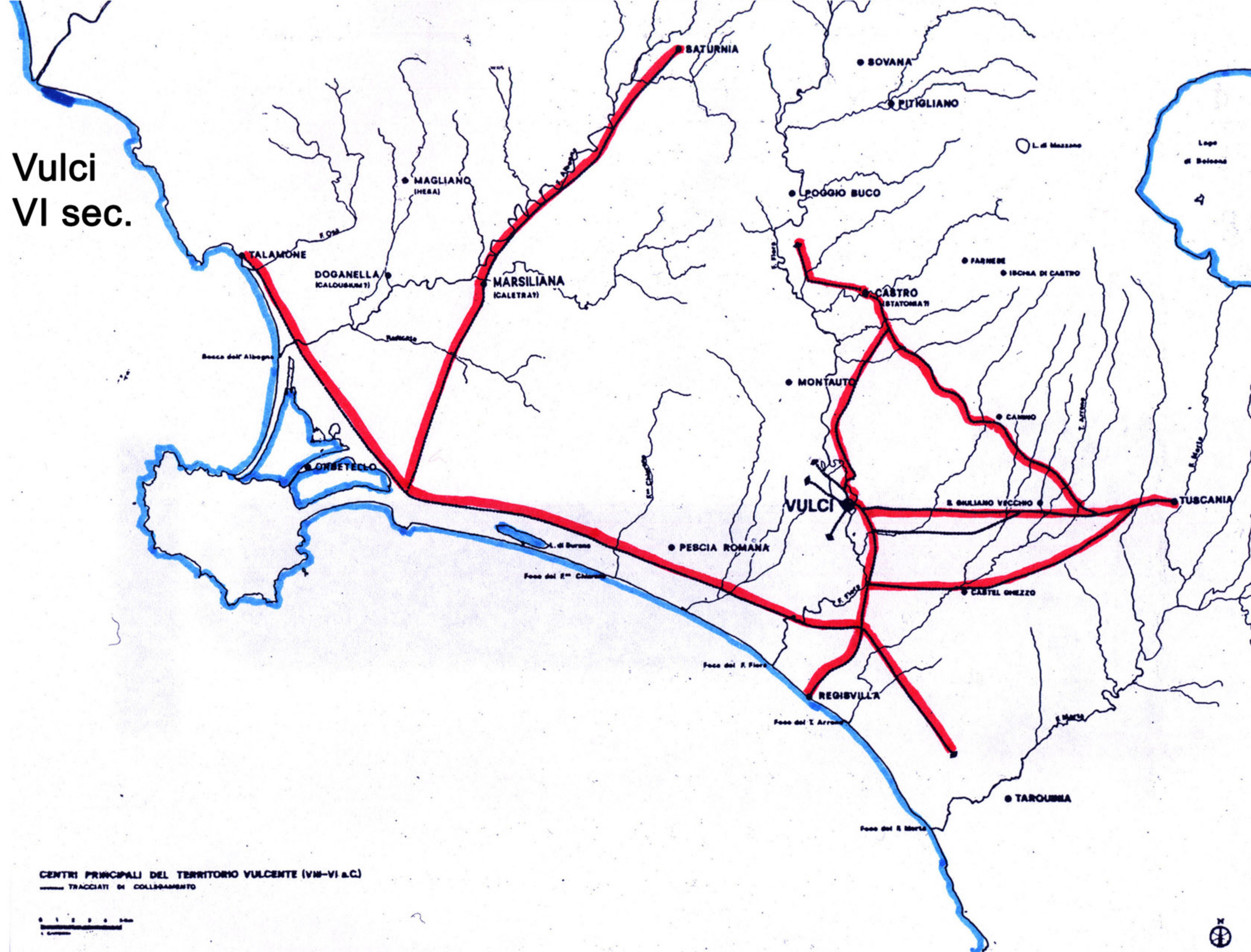
La via Clodia:
infrastruttura chiave
nell'alleanza
tra Etruria e Roma



Diffusione di oggetti in bronzo di epoca villanoviana in Europa



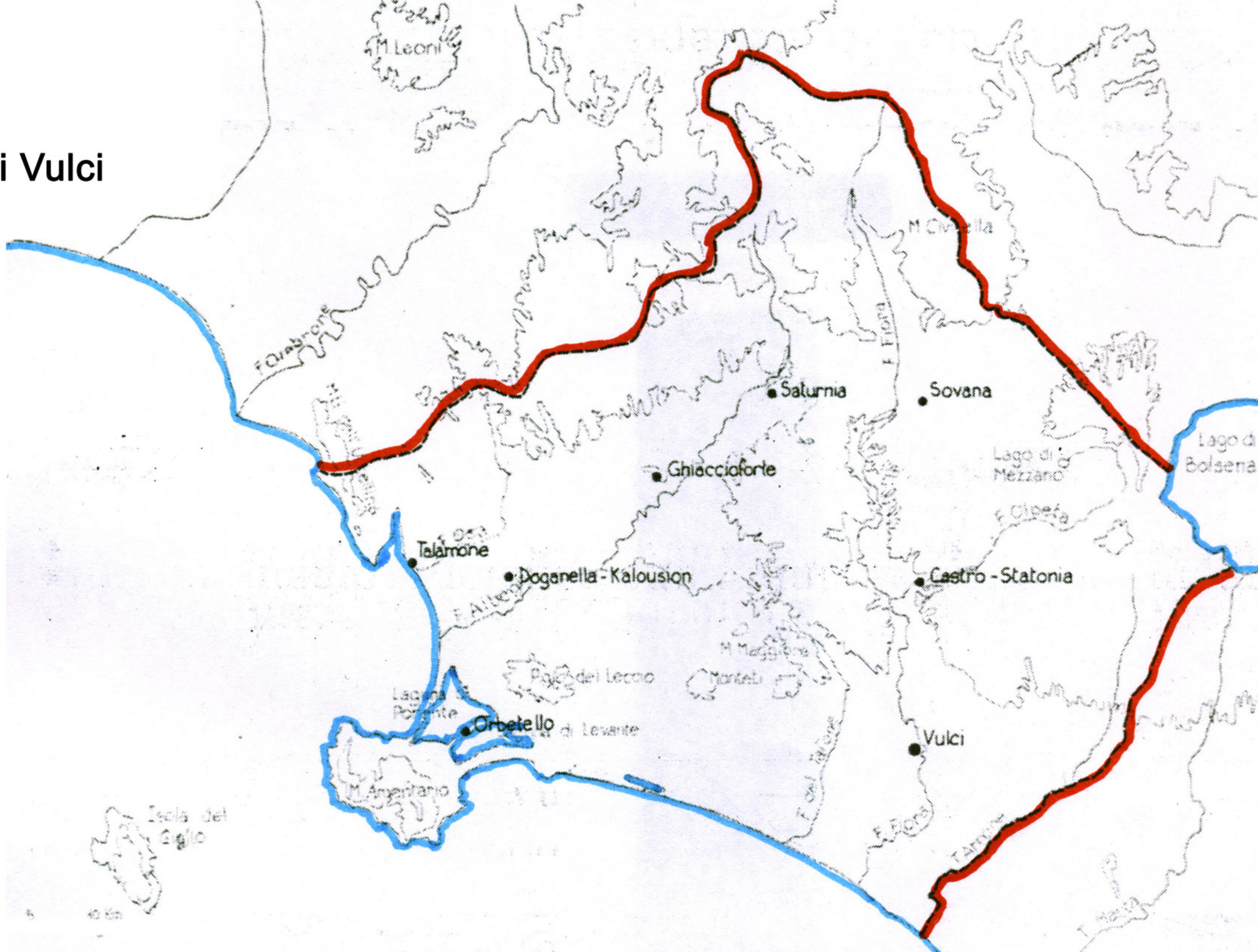
Il territorio di Vulci fra il VII ed il VI sec.



CENTRI PRINCIPALI DEL TERRITORIO VULCENTE (VII-VI a.C.)
 TRACCIATI DI COLLABAMENTO



Il territorio di Vulci nel IVsec.



La via Clodia tra Saturnia e Tuscania



SATURNIA

SOVANA

SORANO

VITTOZZA

GROTTE DI CASTRO

BOLSENA

PITIGLIANO

GRADOLI

LATERA

MANCIANO

POGGIO BUCO

ROFALCO

VALENTANO

VISENTIUM

FARNESE

ISCHIA DI CASTRO

CAPODIMONTE

CASTRO

MARTA

PIANIANO

CELLERE

PIANSANO

MATERNUM

TESSENNANO

CANINO

ARLENA

ORBETELLO

CAPALBIO

SETTE FINESTRE

COSA

VULCI

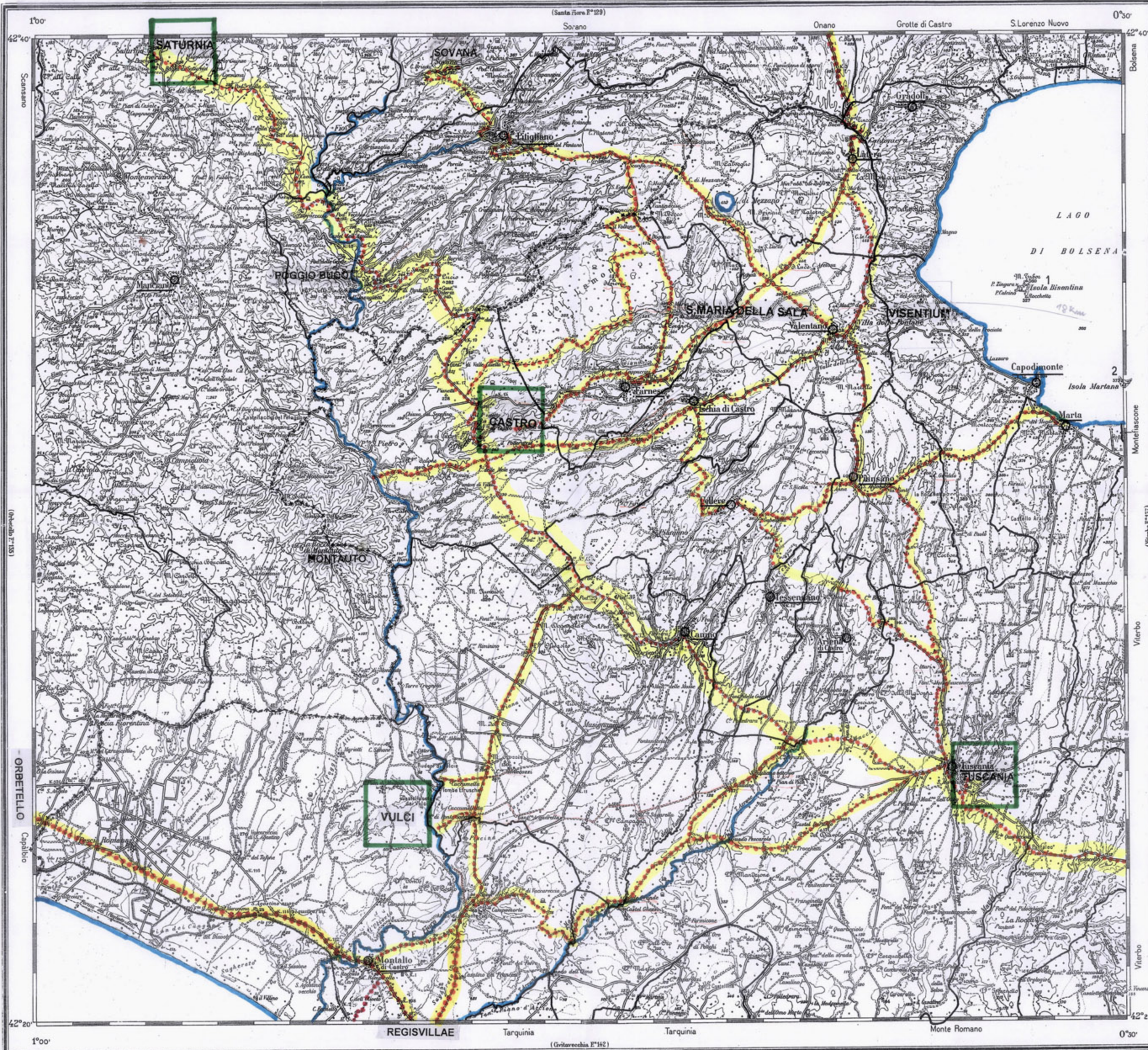
TUSCANIA

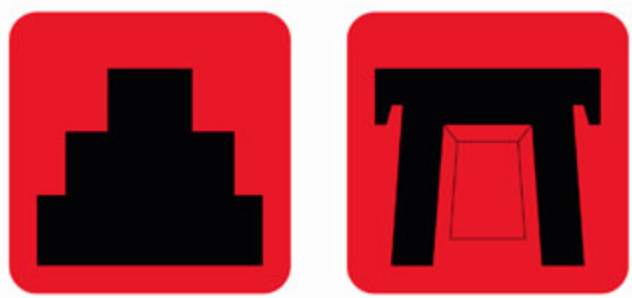
MONTALTO DI CASTRO

FORUM AURELI

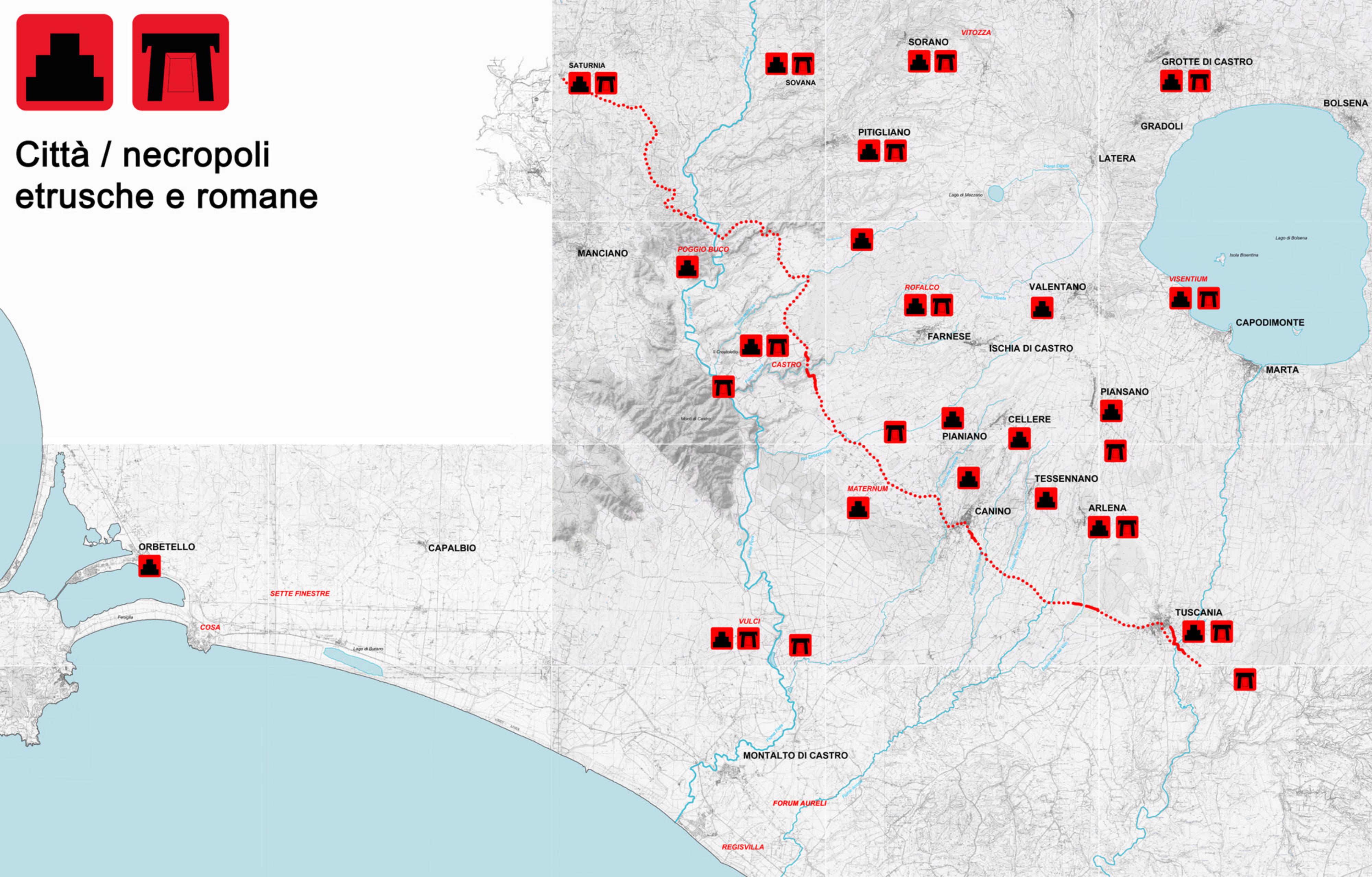
REGISVILLA

La rete delle antiche vie



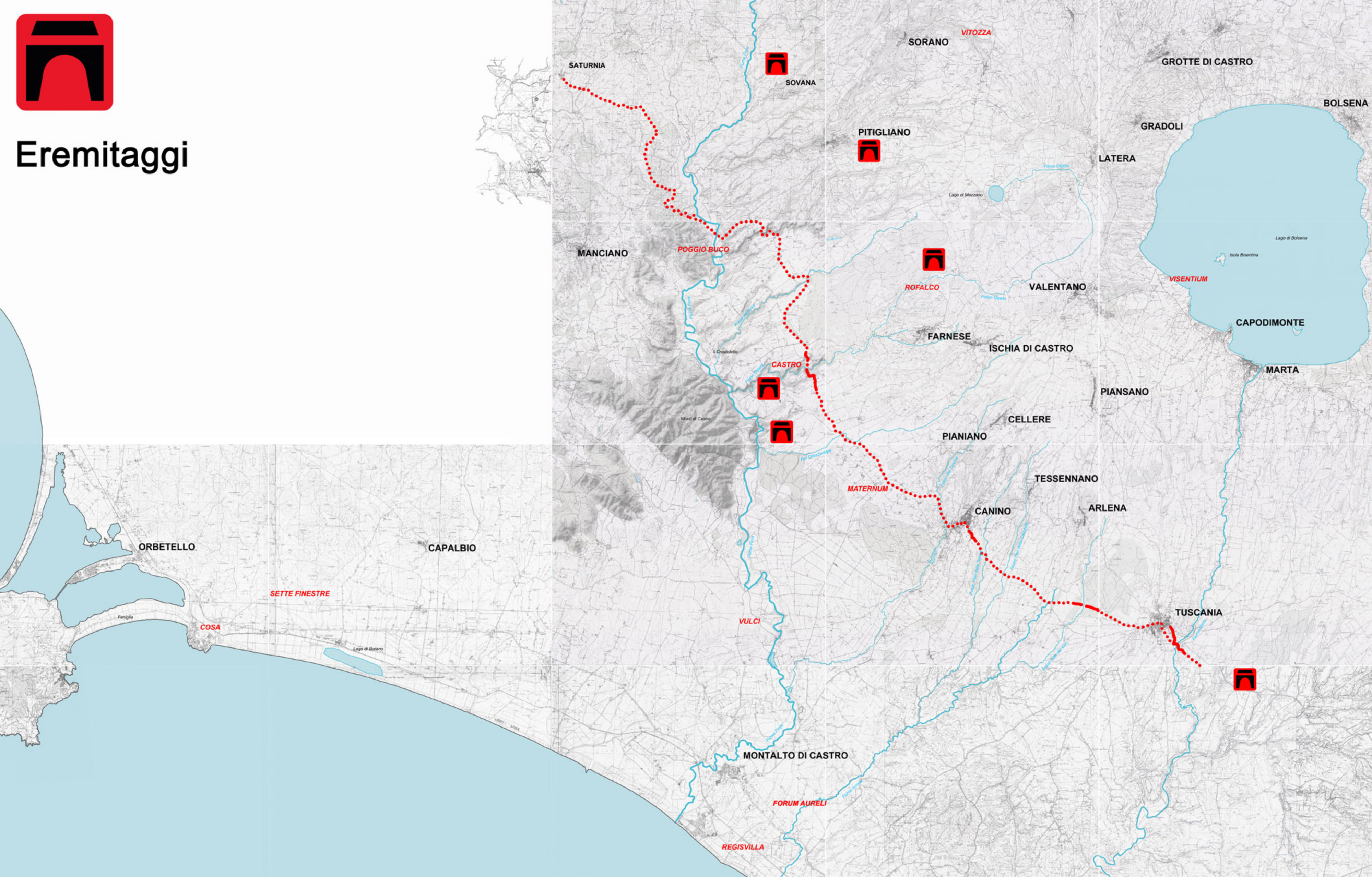


Città / necropoli etrusche e romane

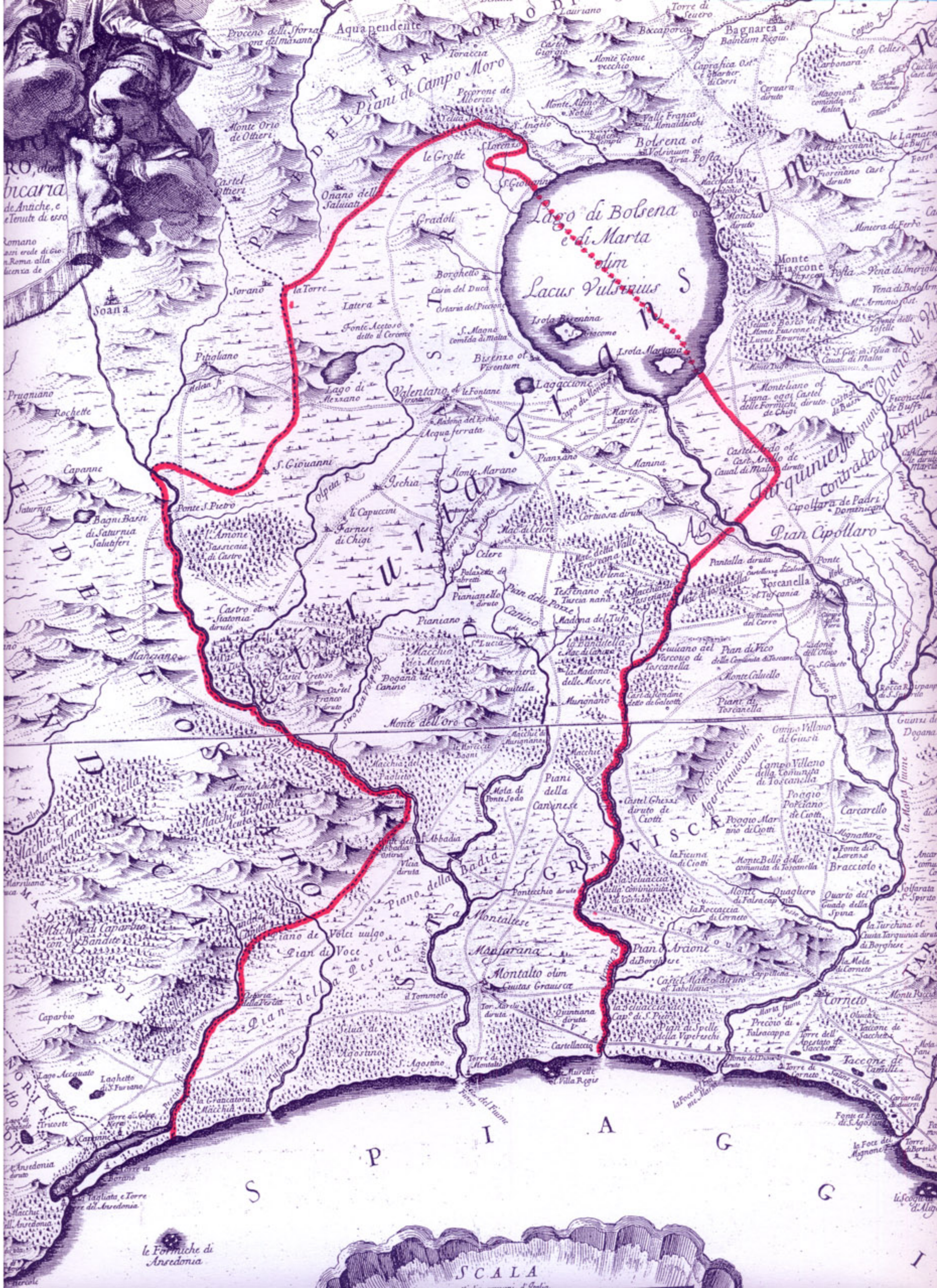




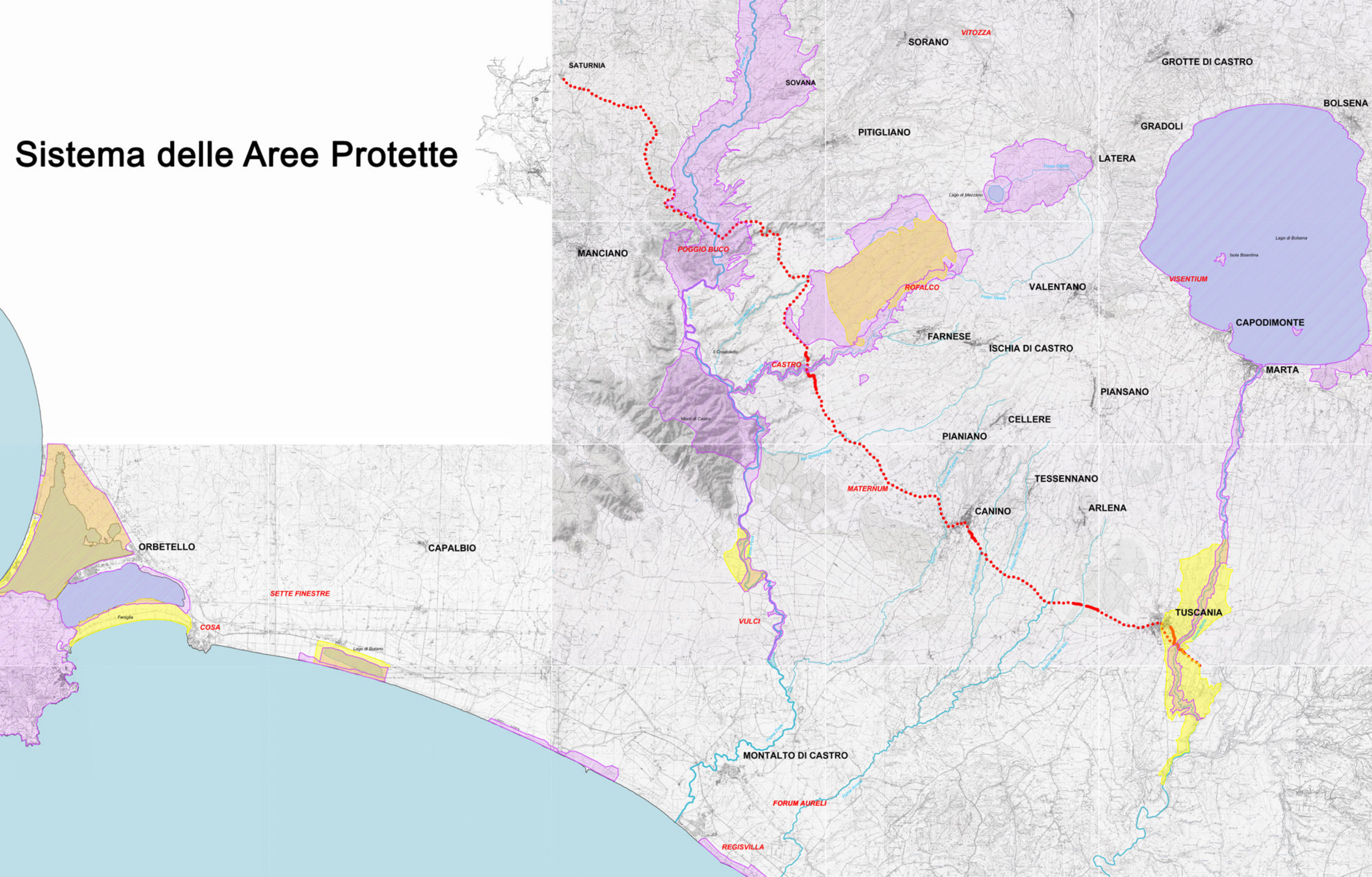
Eremitaggi



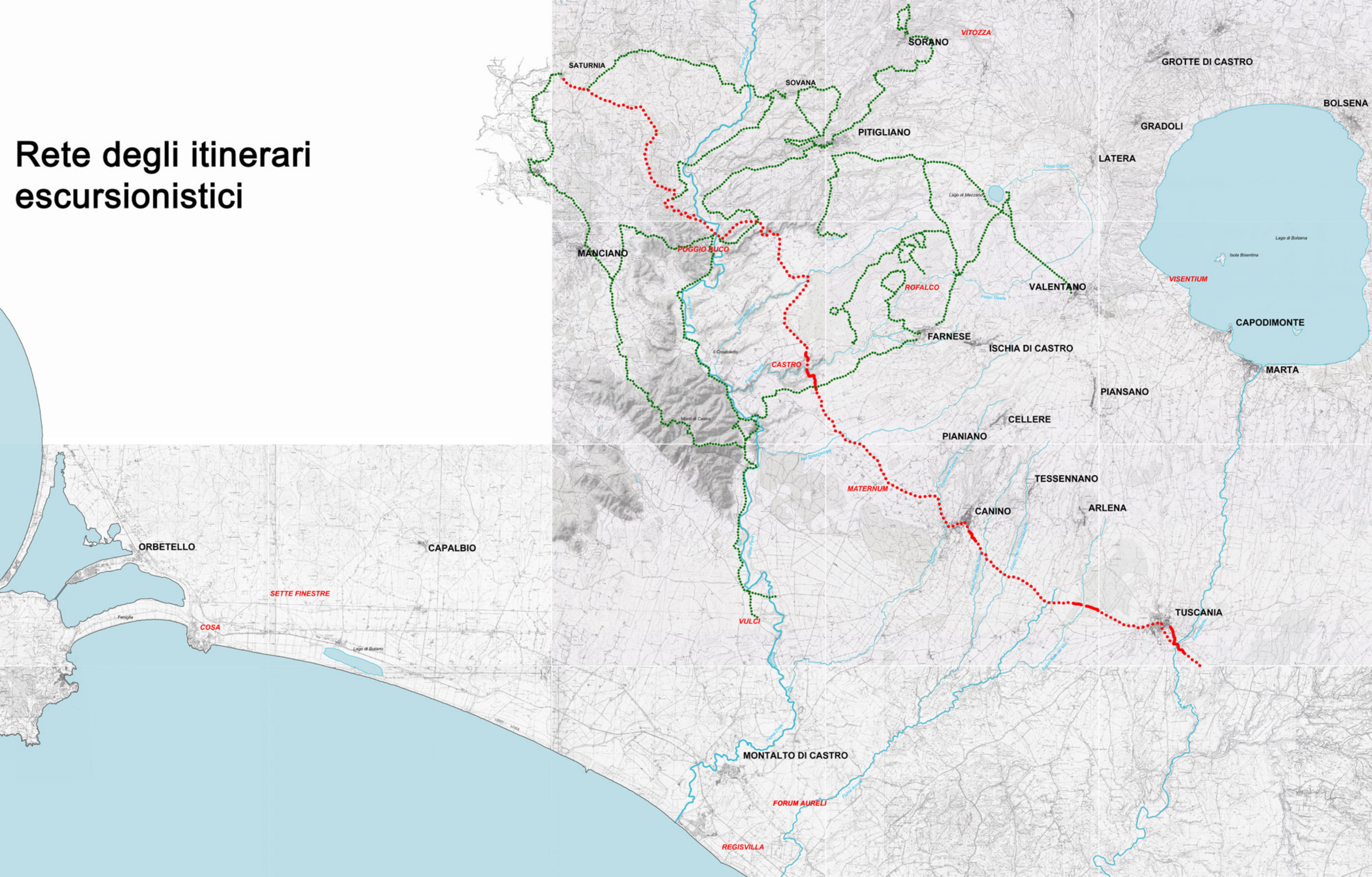
Il Ducato di Castro (carta di Ameti 1696)



Sistema delle Aree Protette

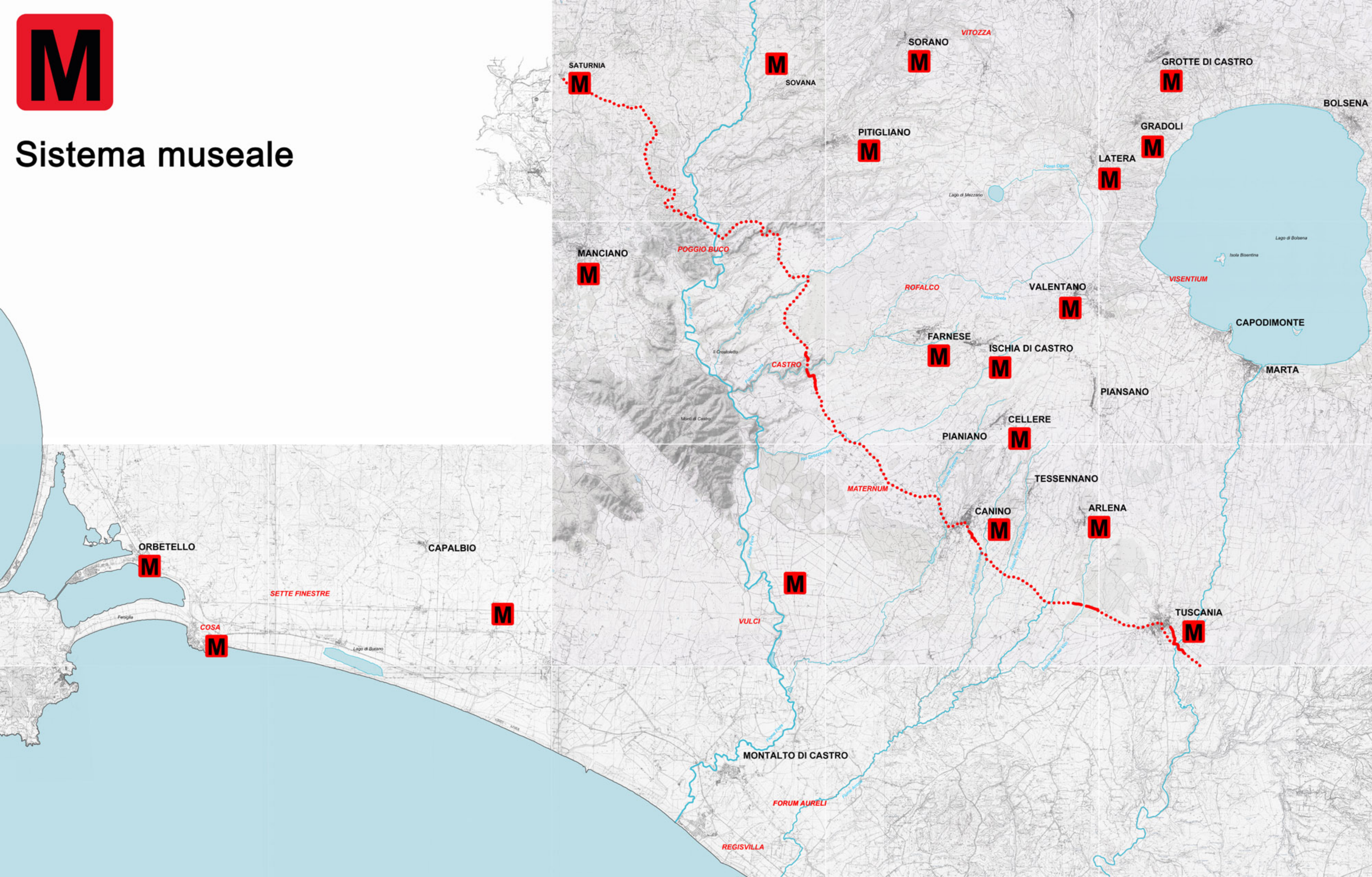


Rete degli itinerari escursionistici



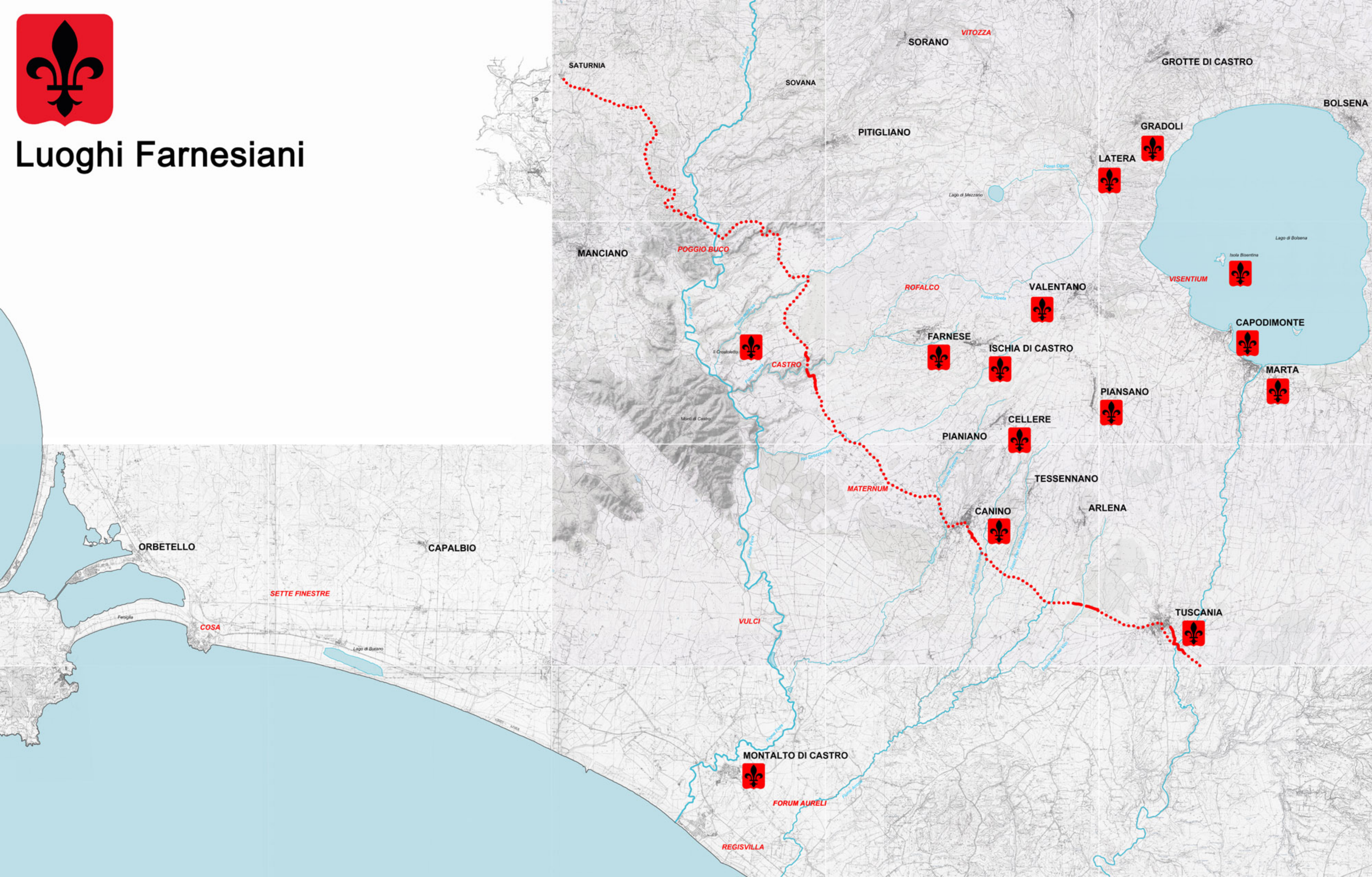


Sistema museale





Luoghi Farnesiani



Progetto pilota via Clodia

