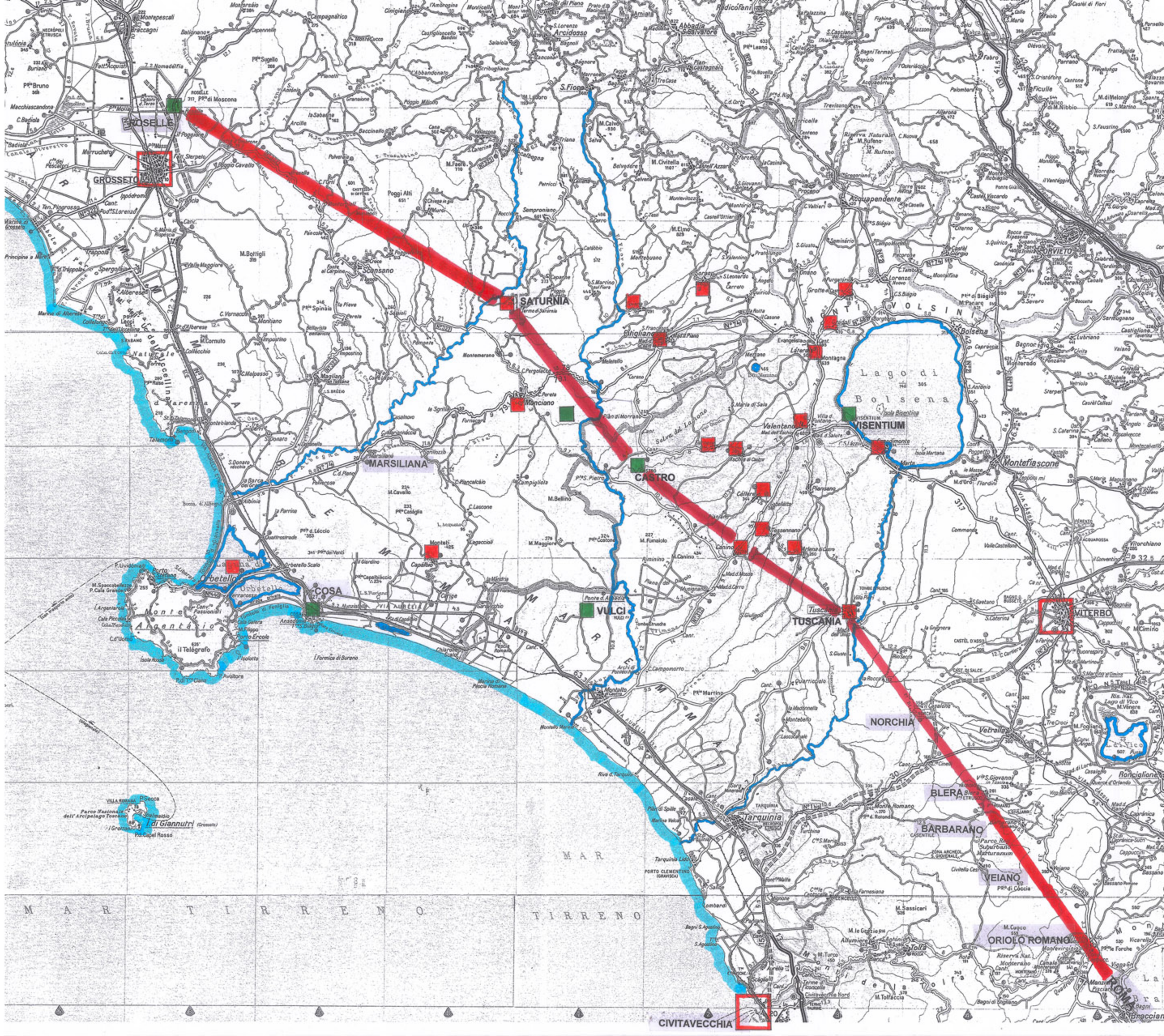
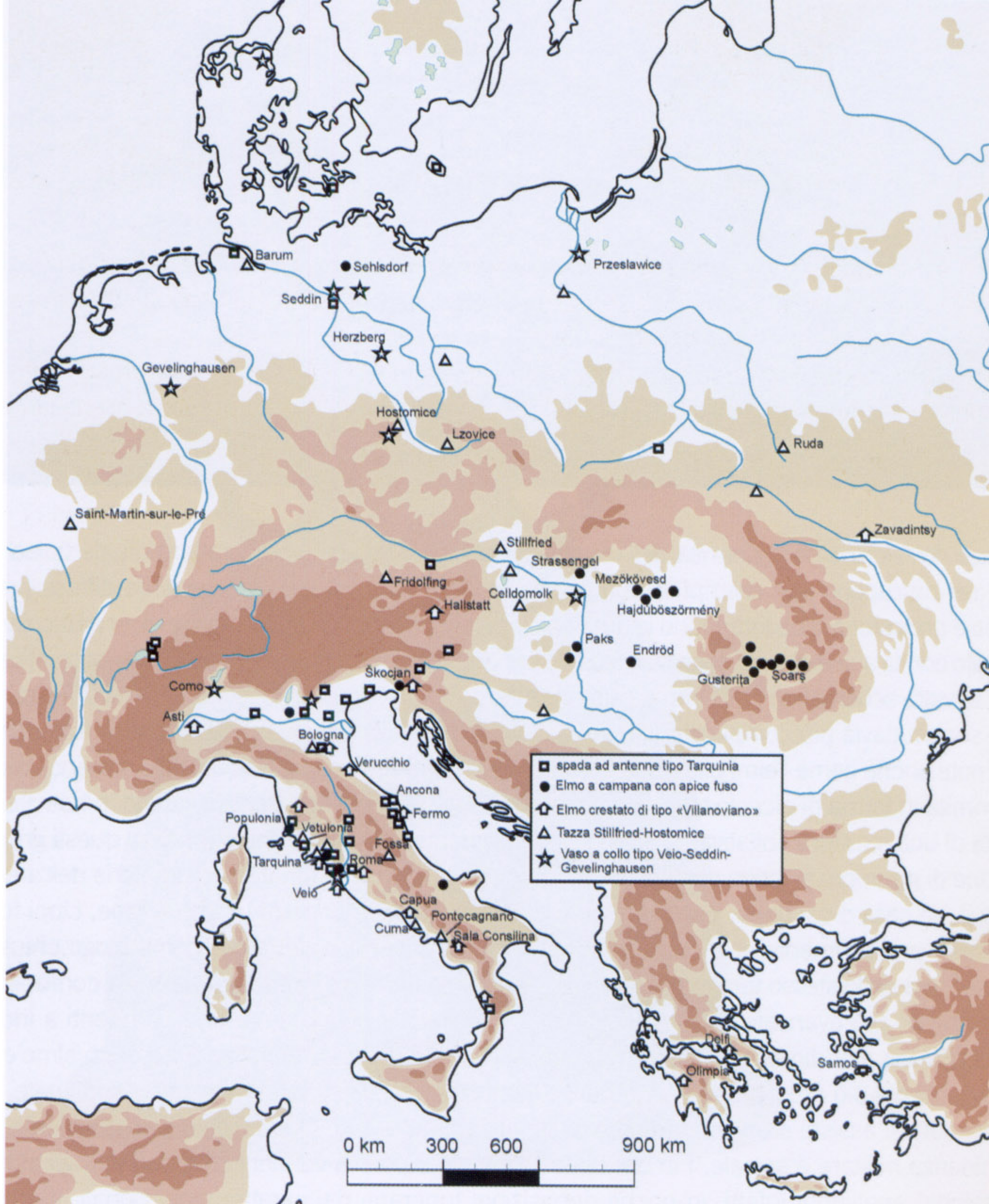


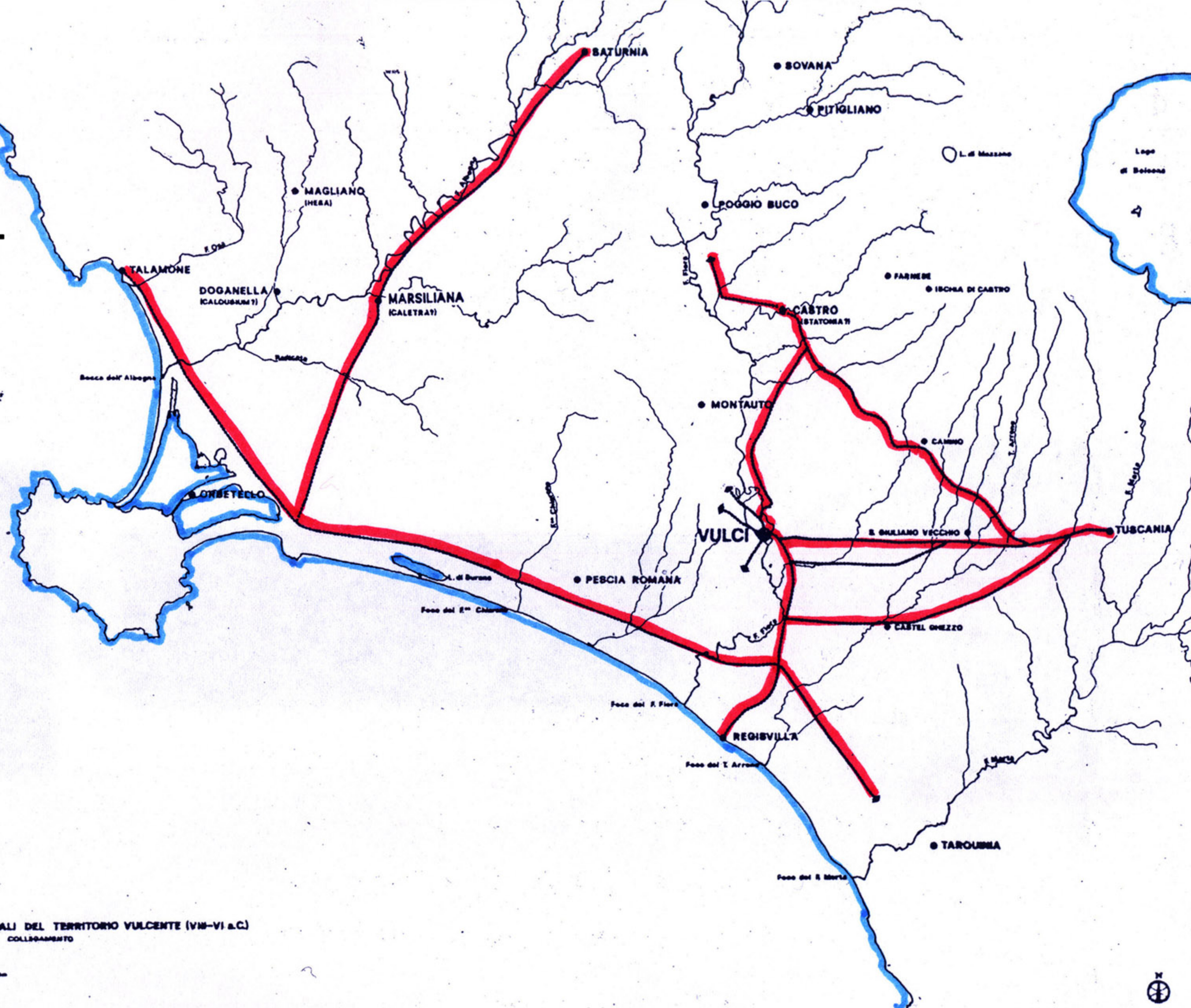
La via Clodia:  
infrastruttura chiave  
nell'alleanza  
tra Etruria e Roma



# Diffusione di oggetti in bronzo di epoca villanoviana in Europa



# Il territorio di Vulci fra il VII ed il VI sec.



CENTRI PRINCIPALI DEL TERRITORIO VULCENTE (VII-VI a.C.)  
TRACCIATI DI COLLABAMENTO



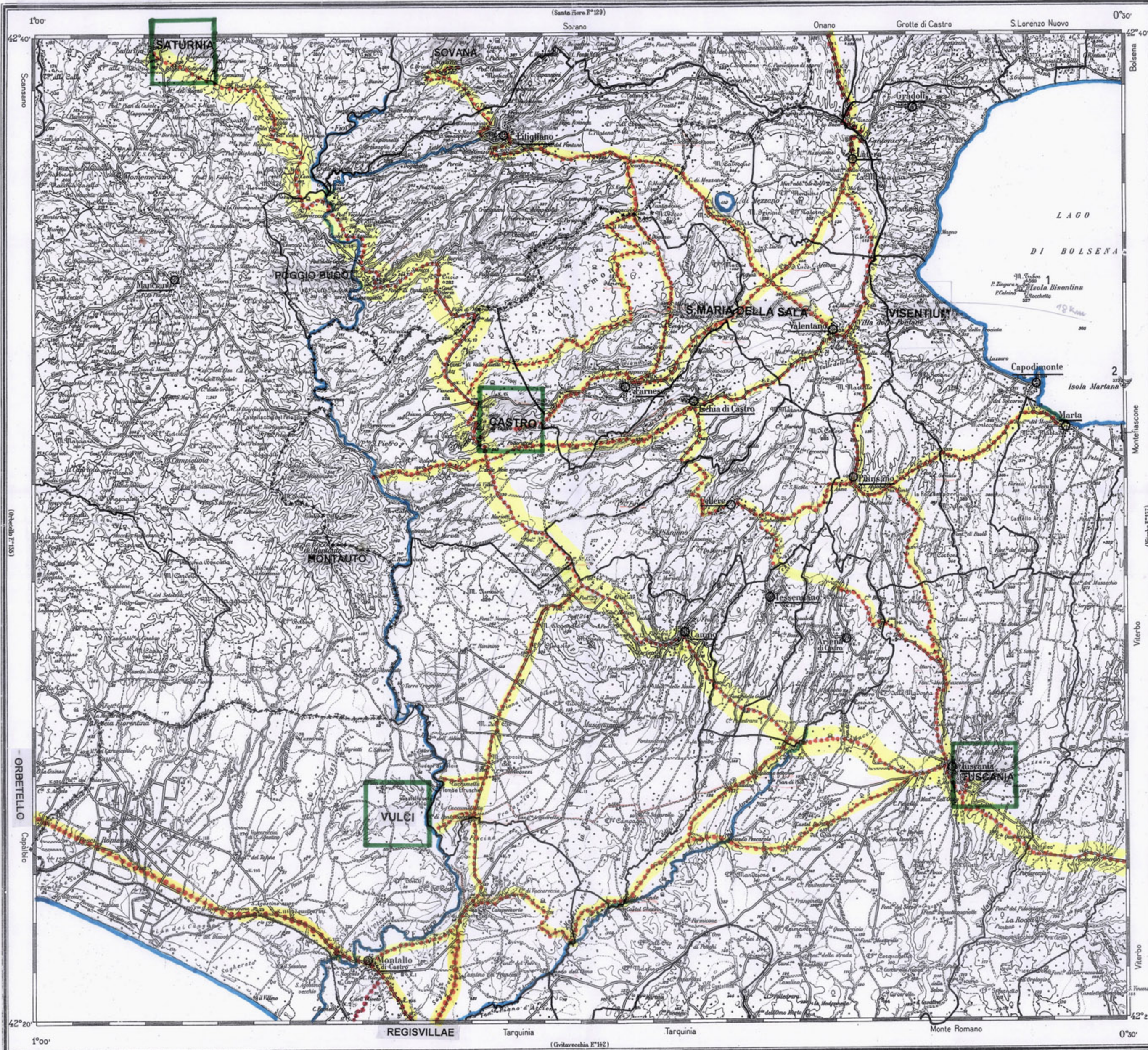
**Il territorio di Vulci nel IVsec.**

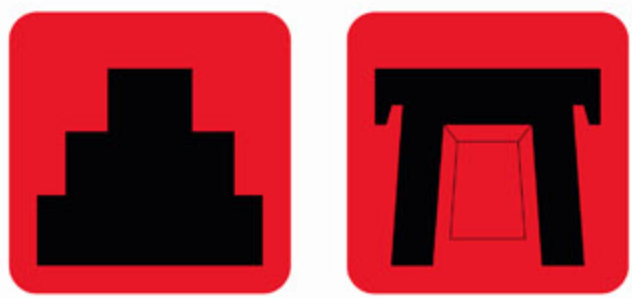


# La via Clodia tra Saturnia e Tuscania

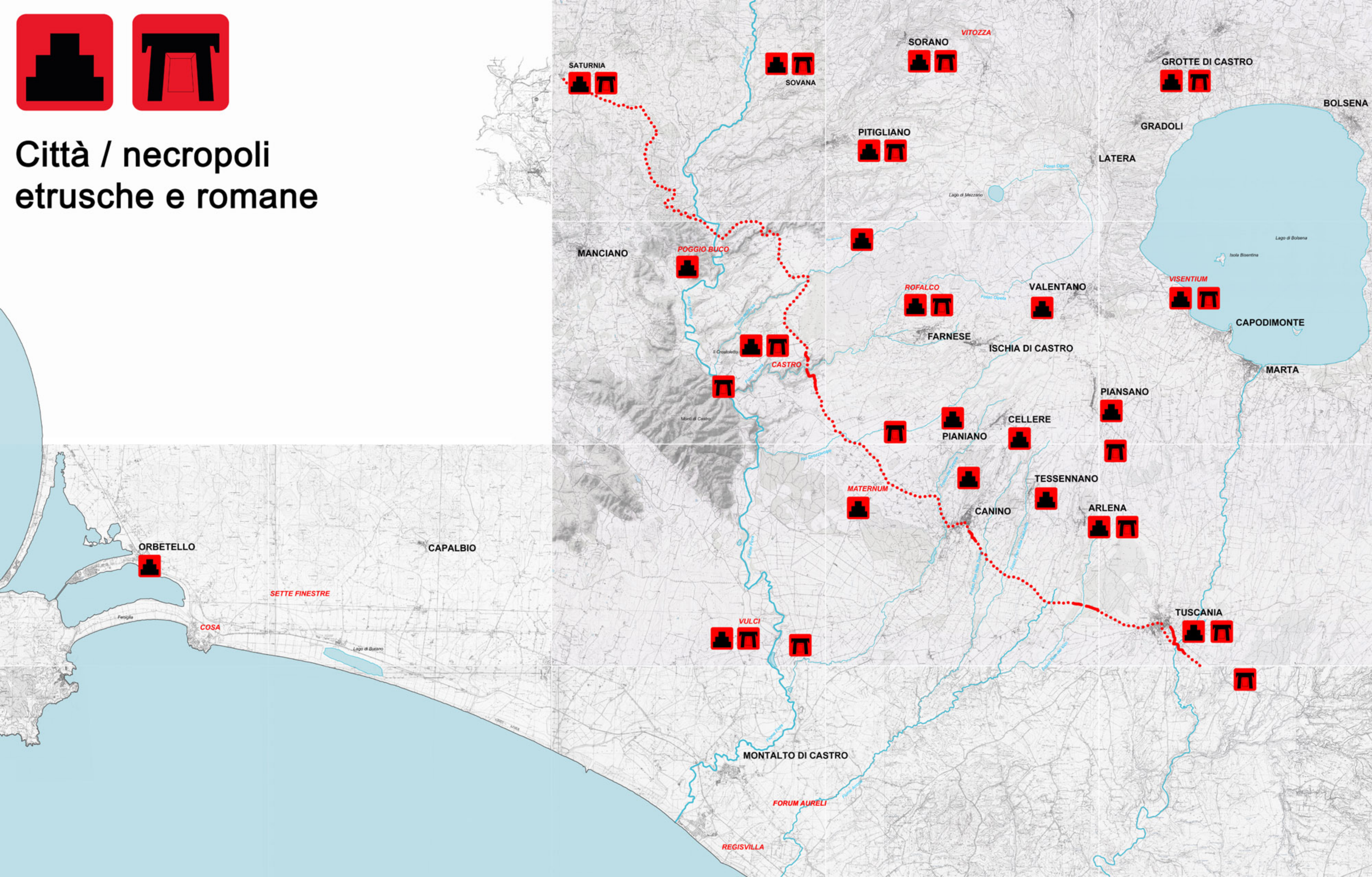


# La rete delle antiche vie



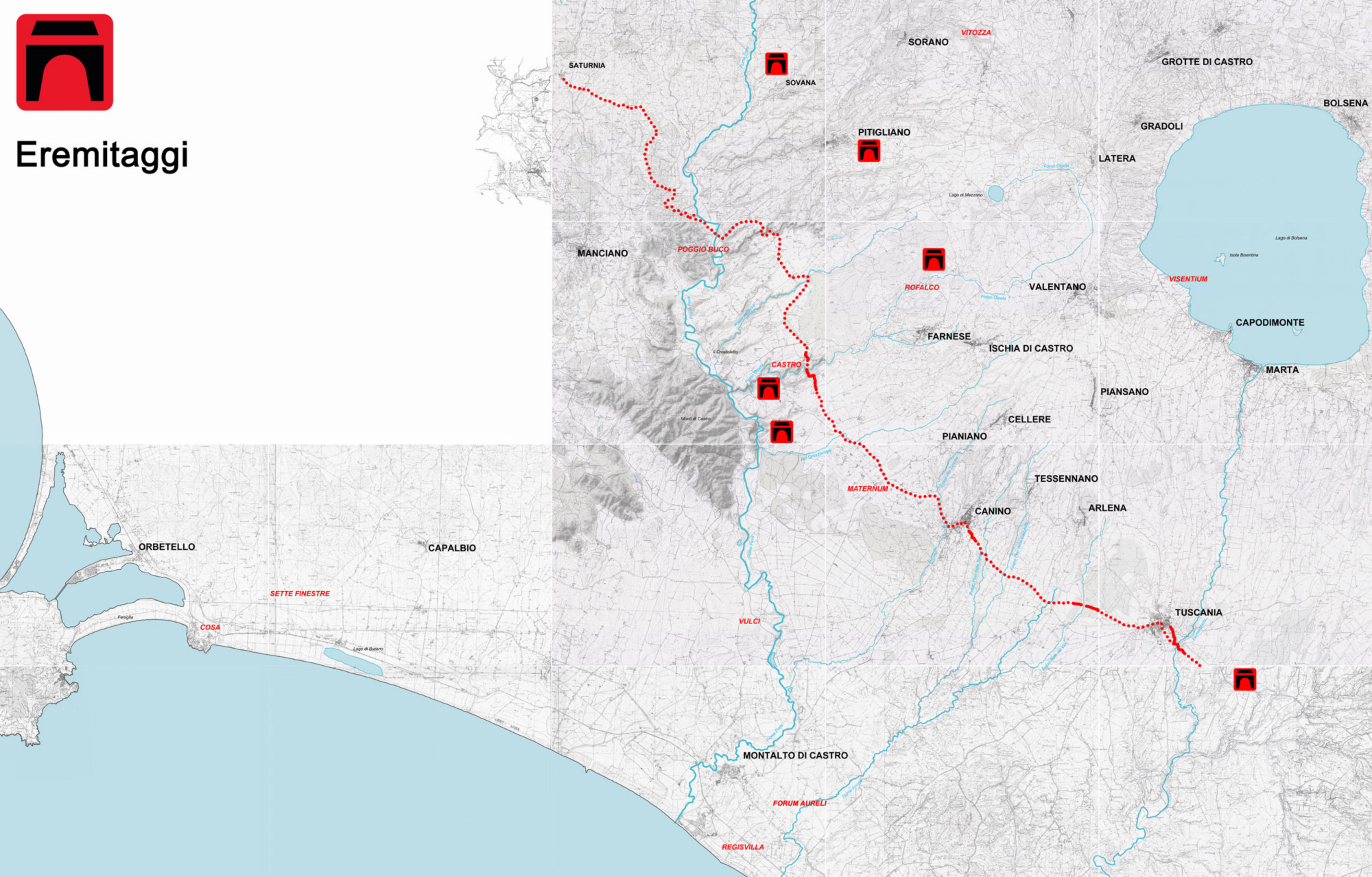


# Città / necropoli etrusche e romane



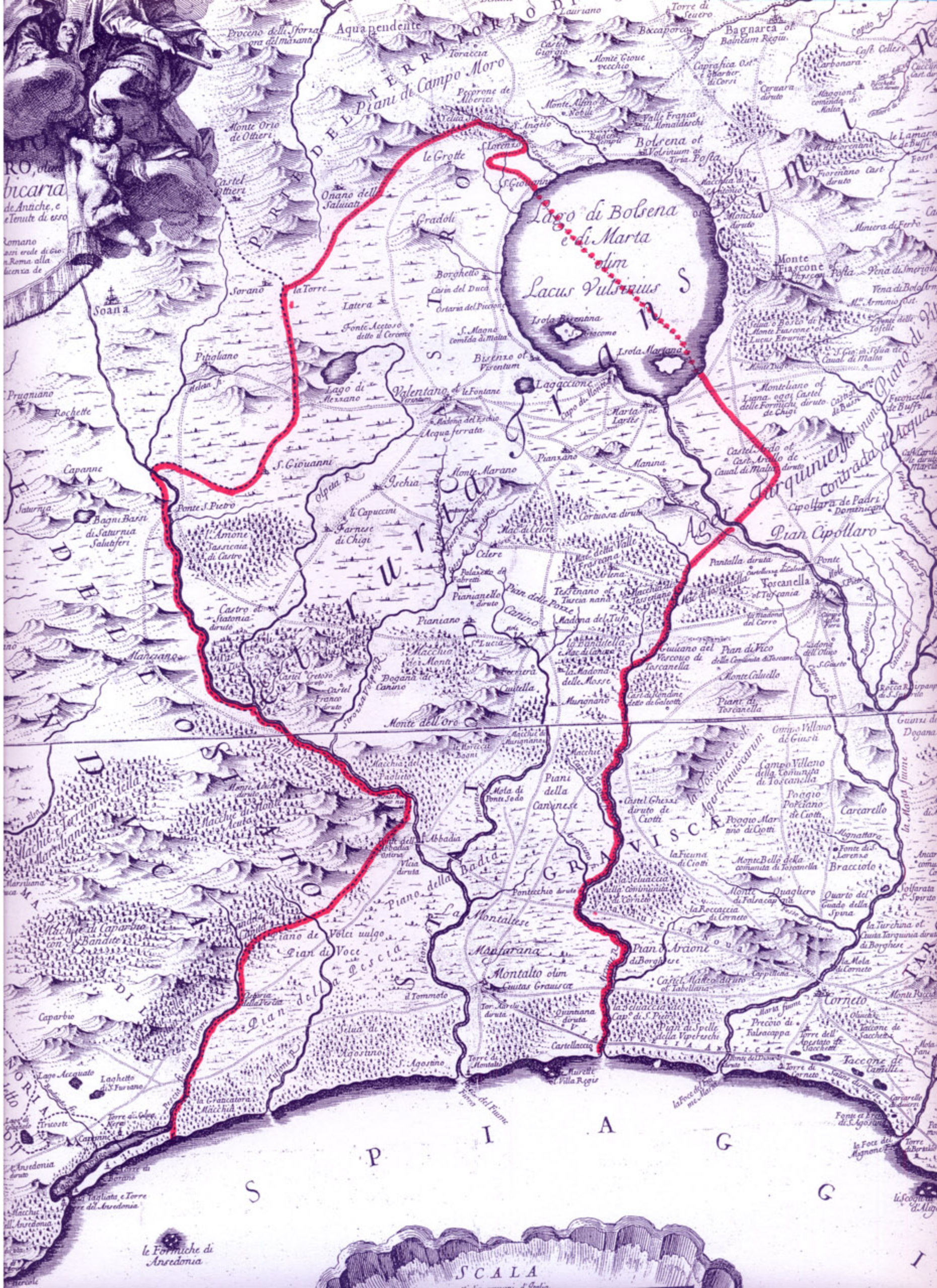


Eremitaggi



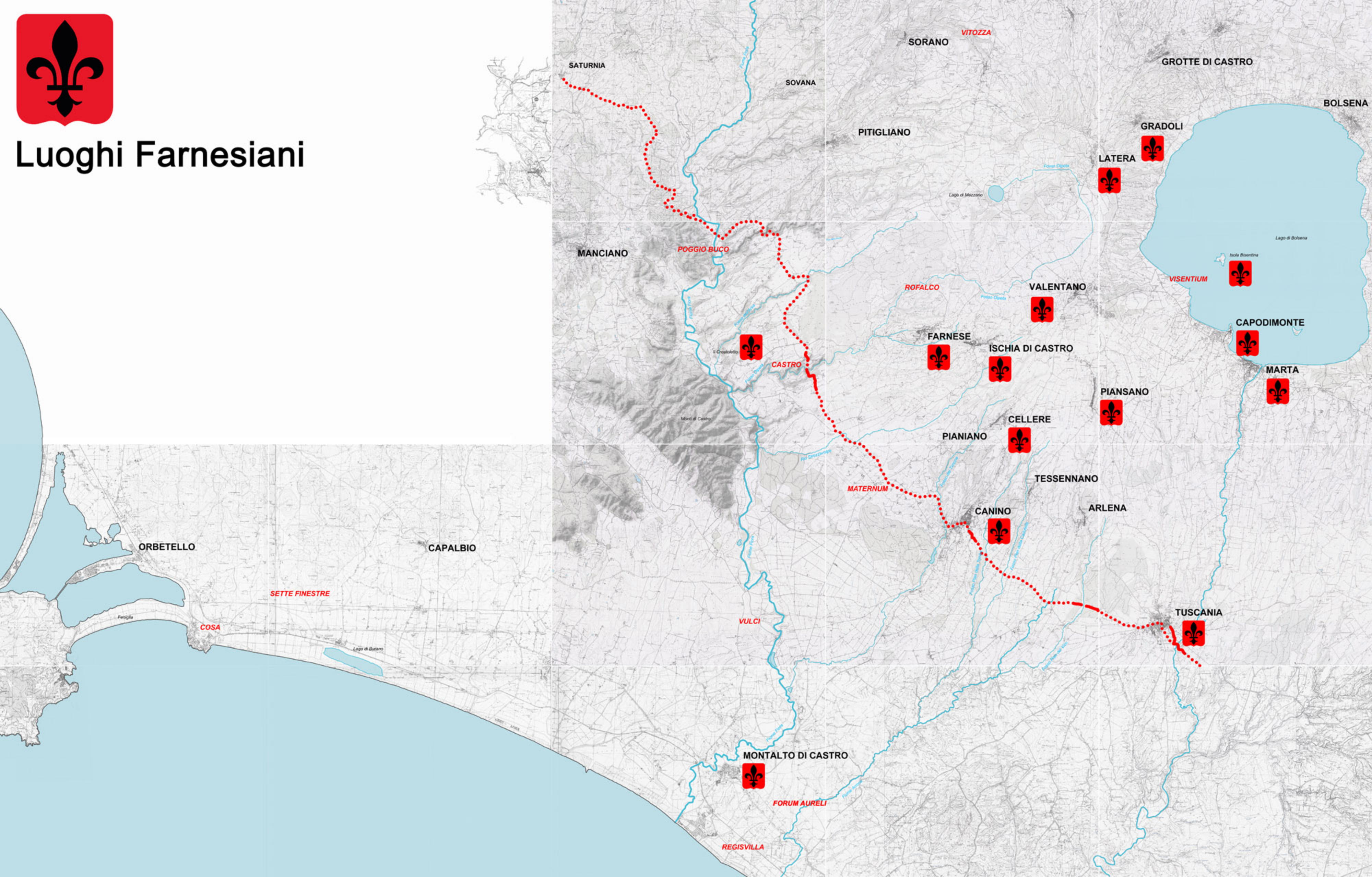


# Il Ducato di Castro (carta di Ameti 1696)

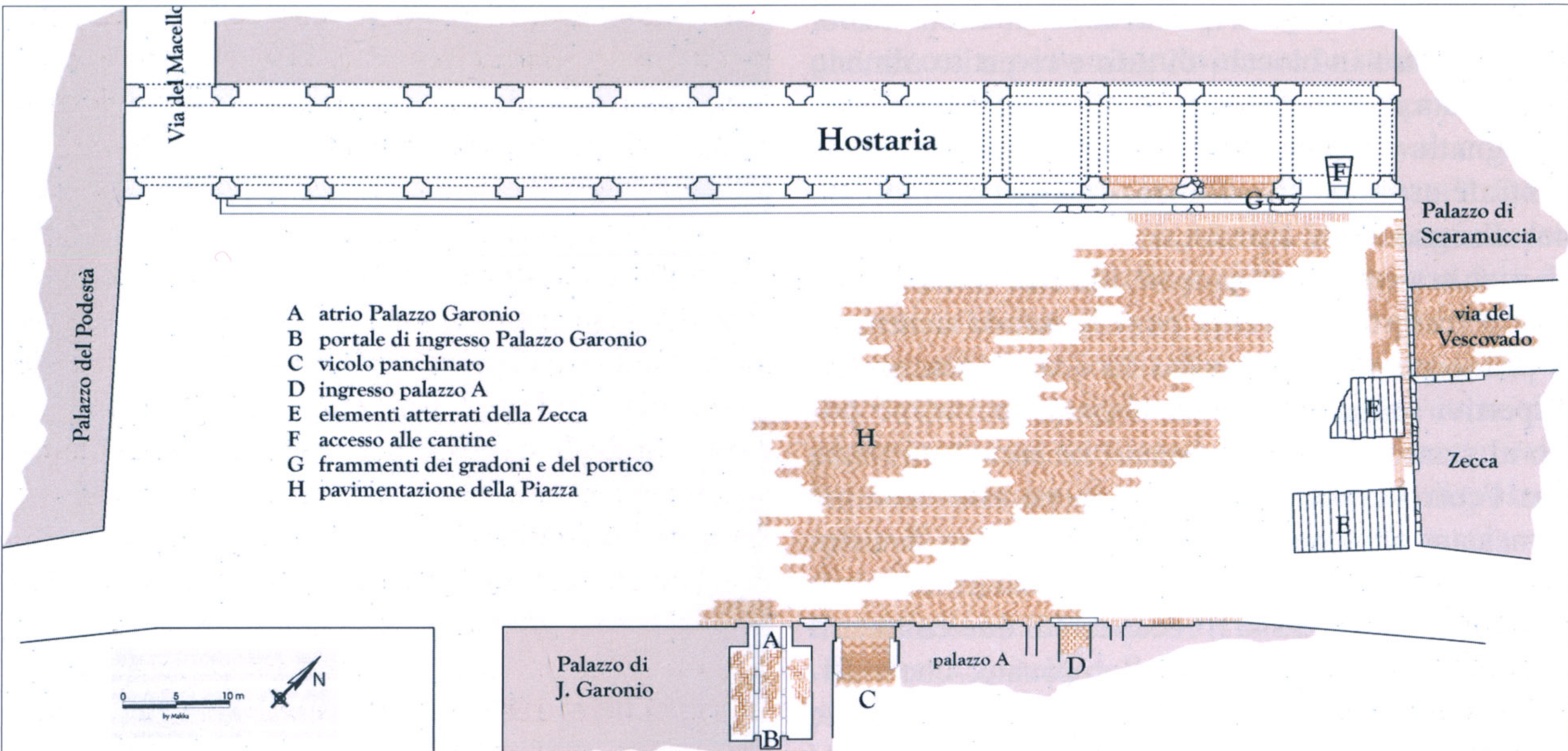




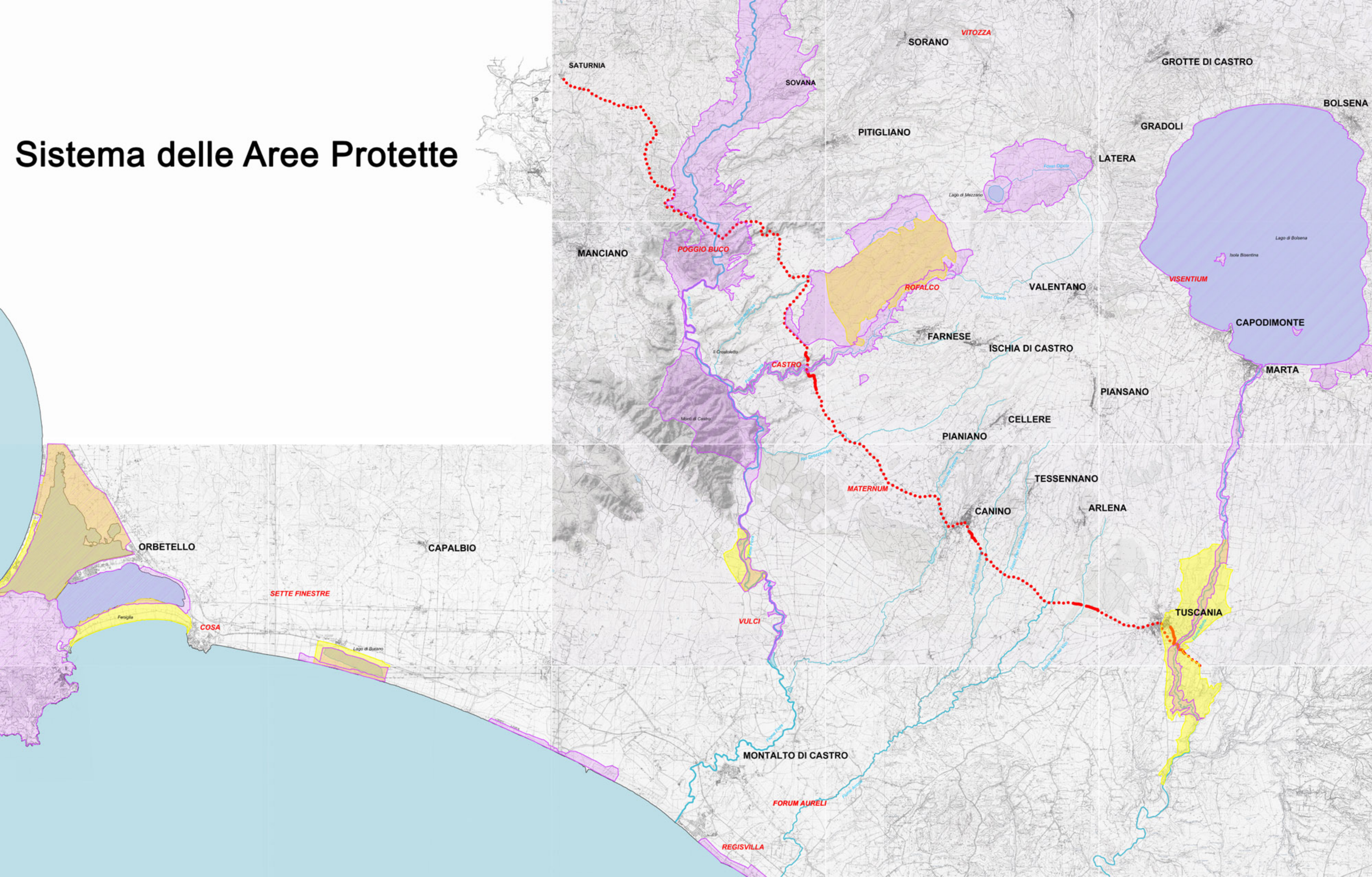
# Luoghi Farnesiani



# Castro: la piazza principale



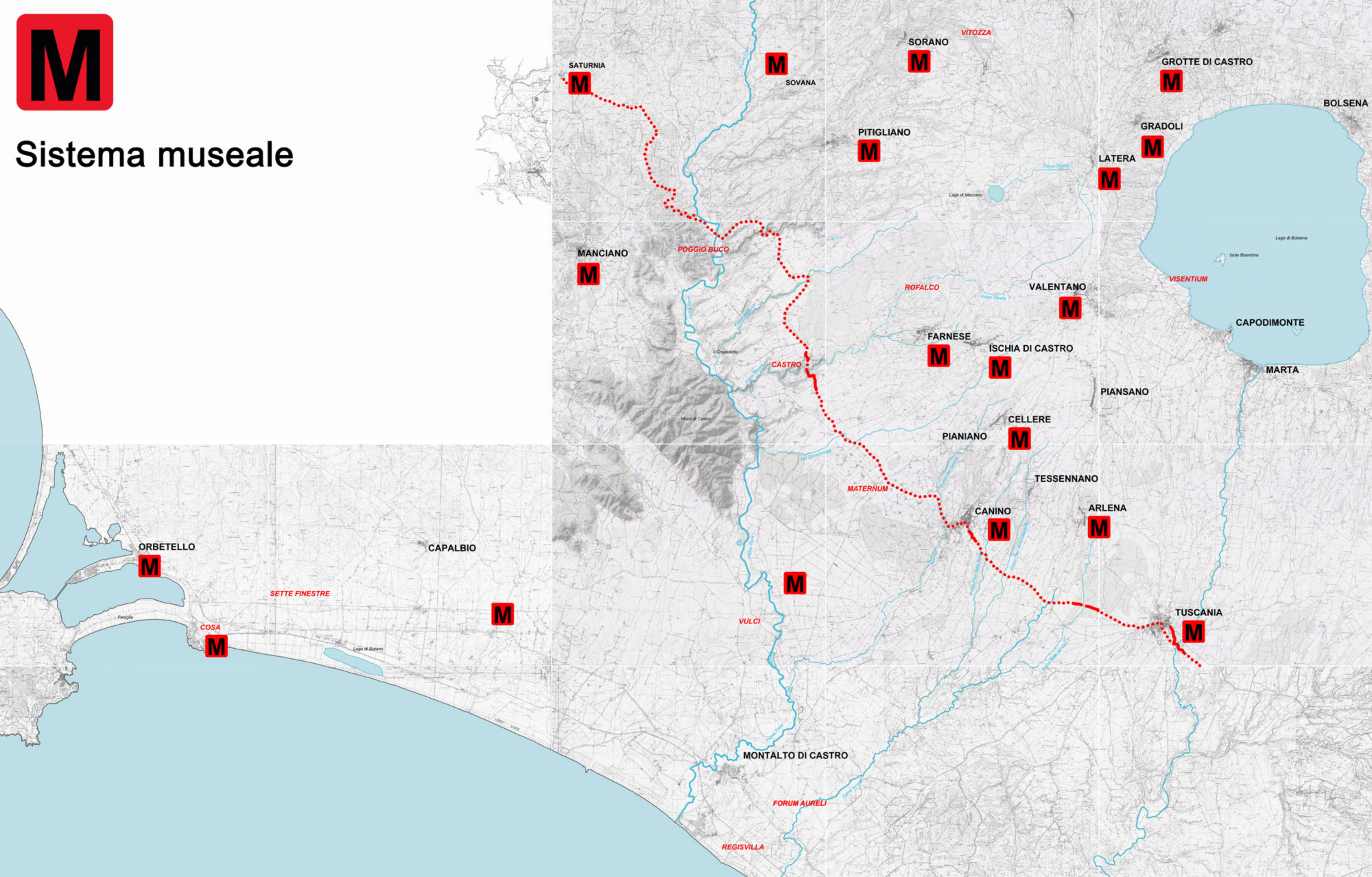
# Sistema delle Aree Protette







# Sistema museale



# Progetto pilota via Clodia

